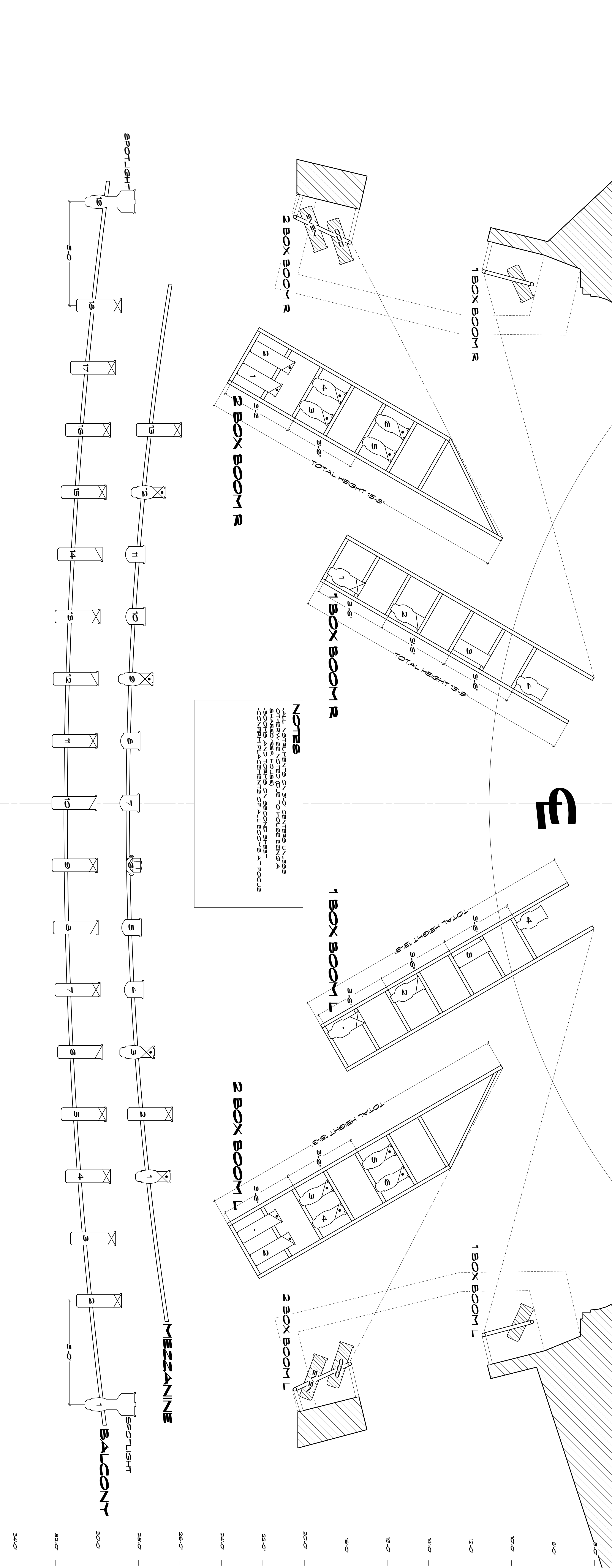


HANGING PLOT



NOTES
 ALL INSTRUMENTS ON 3" O.C. CENTERS UNLESS OTHERWISE NOTED. DUE TO HOUSE BEING A 5' BOX, ALL INSTRUMENTS ARE TO BE PLACED AT CENTER PLACEMENTS OF ALL BOOMS AT FOCUS.

DUKE KAWAKOKE vs. THE SURFNAPPERS
 THE HERBIE RESNIN THEATRE
 BRING 2001

DESIGNED BY: [Name]
 DRAWN BY: [Name]
 CHECKED BY: [Name]
 DATE: 9/18/01

OVERHEAD/FOH

SCALE: 1/2" = 1'-0"

DATE: 9/18/01

OF 3

KEY

- SOURCE 4.36
- SOURCE 4.26
- SOURCE 4.19
- SOURCE 4.10
- SNS 575 W
- SNS 575 W
- SNS 575 W
- SNS 575 W
- ALTMAN KW 30
- ALTMAN KW 20
- ALTMAN KW 12
- AF 1000
- 8 Free KW
- PAR 64 VFL KW
- PAR 64 NFP KW
- PAR 64 VFL KW
- BEAM HORN

TYPICAL

- UNIT #
- GOBO
- 4 RUNNER SCROLLER

0' LINE

34'-0"

32'-0"

30'-0"

28'-0"

26'-0"

24'-0"

22'-0"

20'-0"

18'-0"

16'-0"

14'-0"

12'-0"

10'-0"

8'-0"

6'-0"

4'-0"

2'-0"

0'